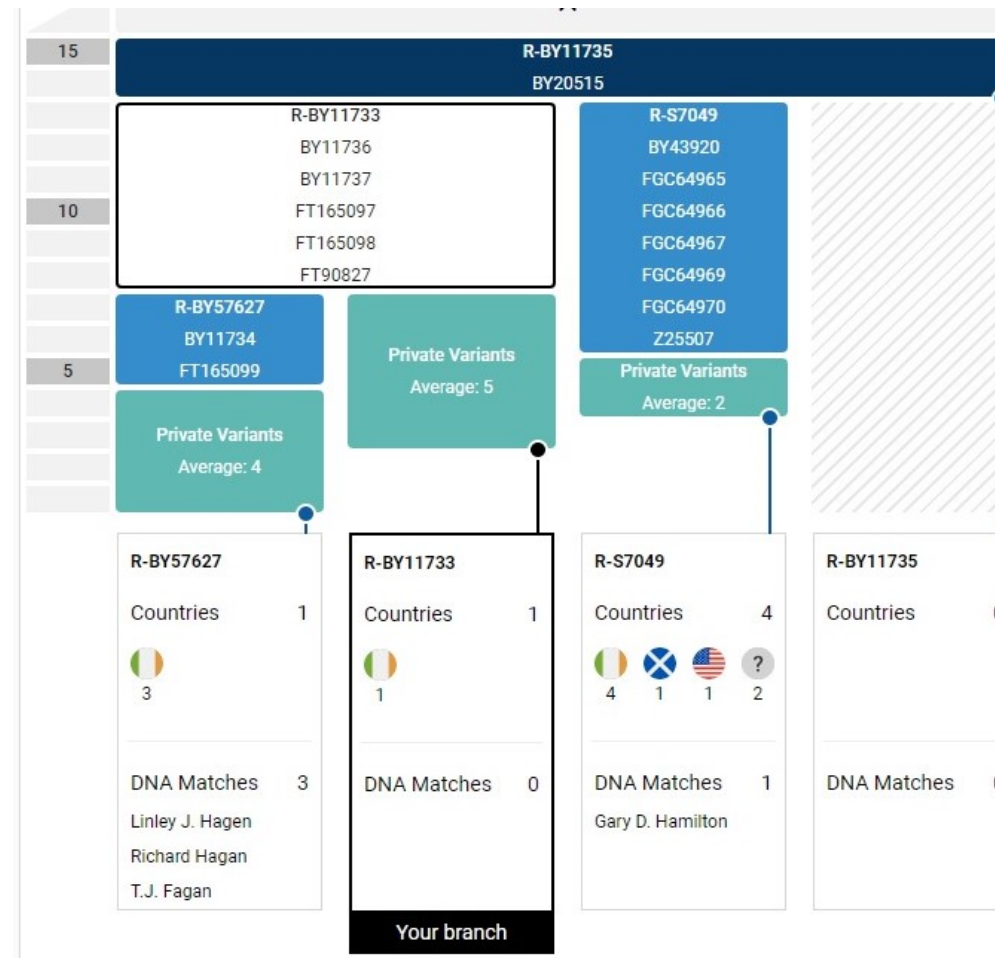


Sort	Branch	hg38#	rs ID	
1	HmoErectl	21,292,569	T G	
2	Y Adam	2844421	A G	
3	L1085	2,922,685	T C	
4	P305	2842113	A G	RS72625368
5	P108	13,314,368	C T	RS761539052
6	L413	7,064,790	G A	RS192939307
7	M168	10,157,041	C A	RS2032595
8	P143	12,077,161	G A	RS141886
9	M89	19,755,427	C T	RS2032652
10	F1329	8,720,990	C T	RS9786482
11	M578	7,334,662	C T	RS73614810
12	M523	6,885,478	A G	RS9786139
13	M9	19,568,371	C G	RS3900
14	M526	21,389,038	A C	RS2033003
15	M1221	14,110,681	C T	RS9785994
16	P295	8,094,990	T G	RS895530
17	PF5849	3,751,009	C T	RS2574517
18	P337	12,786,160	A G	RS13305774
19	M45	19,705,901	G A	RS2032631
20	M207	13,470,103	A G	RS2032658
21	M173	12,914,512	A C	RS2032624
22	M343	3,019,783	C A	RS9786184
23	L754	20,727,132	G A	RS7893073
24	L389	26,586,954	C G	RS1358368
25	P297	16,544,628	G C	RS9785702
26	M269	20,577,481	T C	RS9786153
27	L23	6,885,470	G A	rs9785971
28	L51	8,634,195	G A	rs9786140
29	P310	16,795,356	A C	RS9786283
30	L151	14,380,667	C T	rs2082033
31	P312	19,995,425	C A	rs34276300
32	Z290	26,486,321	G C	rs146019383
33	L21	13,542,548	C G	rs11799226
34	DF13	2,968,390	A C	rs373989227
35	Z39589	4,571,888	/del	rs1421898156
36	DF49	20,573,713	G A	rs769171919
37	Z2980	15,885,685	T C	rs1006335787
38	Z2976	13,882,542	C G	rs770179167
39	DF23	15,662,529	G A	rs773517566
40	Z2961	7,987,211	C T	rs771631896
41	Z2956	2,954,873	T G	rs1006912931
42	M222	12,790,481	G A	rs20321
43	S658	12,297,941	C A	rs747839864
44	DF104	2,937,793	C T	rs752415261
45	DF105	12,484,132	G A	rs755714899
46	S588	14,233,992	G A	rs953965077
47	BY11735	18,569,107	T C	
48	BY11733	14,002,856	C T	



47	BY11735	T	C
	BY20515	A	G
48	BY11733	C	T
	BY11736	C	T
	BY11737	G	GT
	FT165097	C	G
	FT165098	C	T
	FT90827	G	A
	BY57627	A	?
	BY11734	C	T
	FT165099	A	G

No one yet has been found to match any of my 5 private variants to continue my branch.

